

Recomposition of 6 ruins on Mount  
Luzzone at 2150 meters above sea level  
in the Valley of Malvaglia, Ticino

with Martino Pedrozzi



Gratias Virelli

# WORKSHOP

Open to all architecture students from USI, EPFL and ETH

## Presentation of workshop

• Lausanne	• Mendrisio	• Zurich
EPFL	AAM	ETH
Friday	Monday	Tuesday
5 <sup>th</sup> April	15 <sup>th</sup> April	16 <sup>th</sup> April
Foyer	Lecture hall	HIL E67
SG	CO.64	<i>Rote Hölle</i>
time 13.15	time 12.30	time 12.15

6<sup>th</sup> and 7<sup>th</sup>  
July 2019

Info and registration:  
[www.pedrozzi.com](http://www.pedrozzi.com)

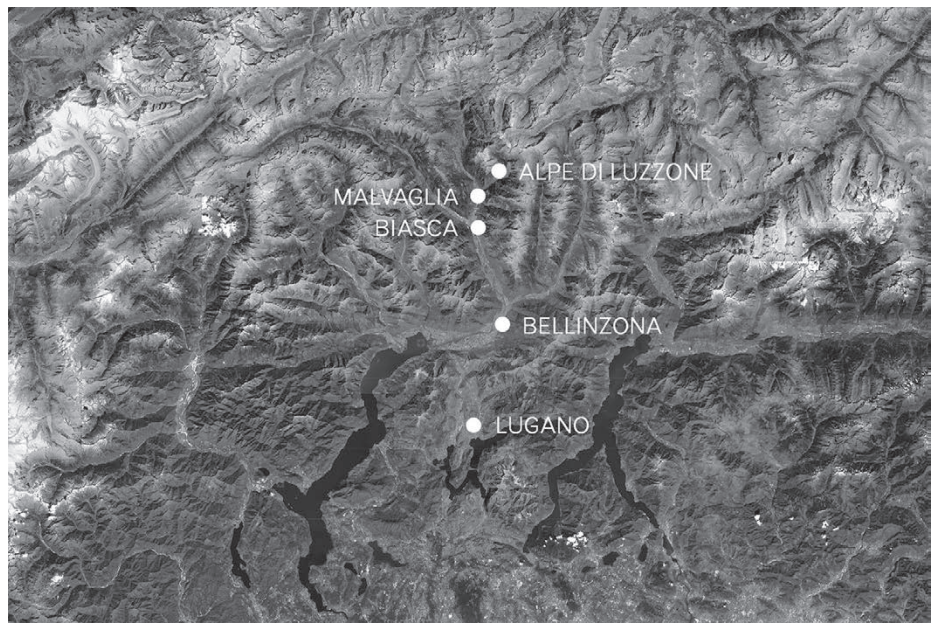
Registration deadline:  
Friday 17<sup>th</sup> May 2019

“To recompose is to recover the stones of the ruin back to within the original perimeter of the building. Physically the recomposition manifests itself as a volumetric redefinition of the ruin and restoration of the space that surrounds it. A work in the landscape for the benefit of its users. However, the contribution is also immaterial and is an act of good will towards the civilization that preceded us”  
M.P.

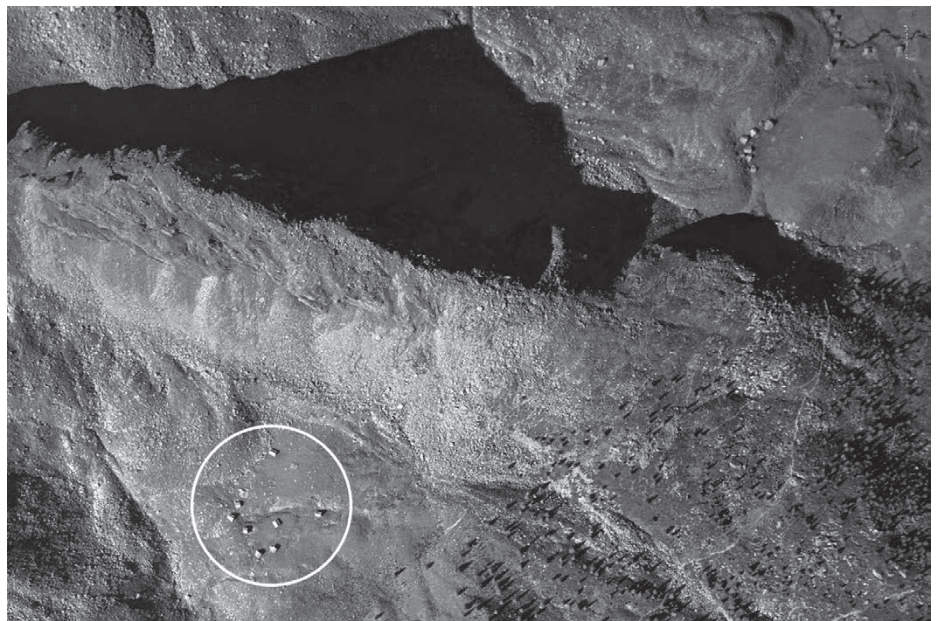
With the support of:

- Comune di Serravalle
- Accademia di architettura di Mendrisio, Università della Svizzera Italiana USI
- Section d'architecture, École Polytechnique Fédérale de Lausanne EPFL
- Institut für Landschaftsarchitektur, Eidgenössische Technische Hochschule Zürich ETH

Mount Luzzone was, up until the mid-50s of the last century, part of a mountain economy characterised by the practice of transhumance. During the 1970s, when the settlement was already almost completely unused and abandoned, an avalanche caused its total ruin and consequent definitive abandonment. Our elementary gesture returns the stones of the ruined farmhouses to within the perimeter of their remains. The recomposition of the ruins is a gesture of preservation, restoring both the buildings original character as a reference point in the landscape and the collective spaces within the settlement.



Location of Mount Luzzone



Mount Luzzone in 1924

The recomposition on Mount Luzzone is part of an initiative inaugurated in 2000 with the recompositions on Mount Sceru, followed later by the recompositions on Mount Giumello and by those on Mount Quarnéi. From the beginning the project has involved the participation of many volunteers coordinated by the architect Martino Pedrozzi.



Recompositions on Mount Sceru



For information and registration  
email: [info@pedrozzi.com](mailto:info@pedrozzi.com)  
Please indicate your  
first name  
last name  
telephone number  
and faculty

Registration to the workshop is free  
of charge